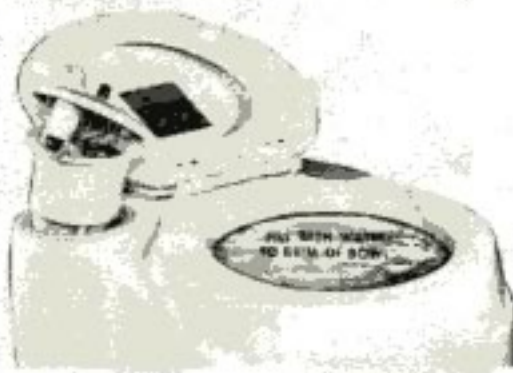


SERVICE INSTRUCTIONS

YOUR MONOMATIC SANITATION SYSTEM HAS BEEN PRECISION ENGINEERED TO EXACTING JET AIRCRAFT SPECIFICATIONS. SEASONAL PREVENTIVE MAINTENANCE WILL ASSURE MANY YEARS OF TROUBLE-FREE OPERATION.

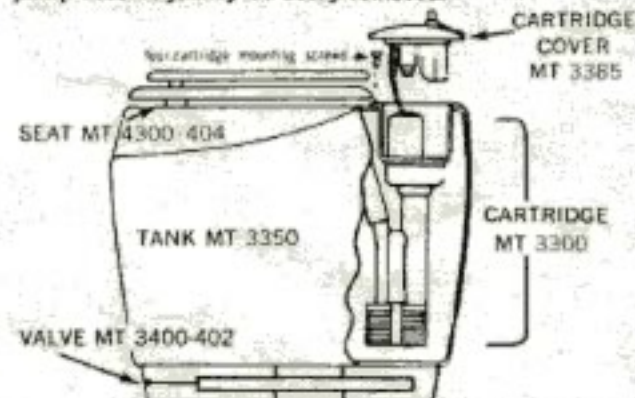
Where facilities are available, it is best to fill the Monomatic with 4 to 8 gallons of water and add $\frac{1}{2}$ cup of cleaner*. Flush several times to automatically clean all internal parts. This solution may remain for 30 minutes for effective cleaning. Open and close valve as required to thoroughly rinse the Monomatic with clear water. Close drain valve, replace skirt and recharge with Monochem T-5 as described above.

Thorough sanitizing of bowl and flush ring without disconnecting filter.



1. Remove four cartridge mounting screws.
2. Raise filter so that the motor chamber is above the flood line (top) of the Monomatic (see illustration).
3. Pour $\frac{1}{2}$ cup of cleaner into the Monomatic.
4. Fill with water to brim of bowl.
5. Let stand for 30 minutes.
6. Rinse thoroughly.
7. Recharge with Monochem T-5.

For thorough cleaning and/or dry storage, the entire Monomatic cartridge, containing motor timer and filter pump assembly, may be easily removed.



SEE ILLUSTRATED CARTRIDGE REMOVAL PROCEDURE ON BACK COVER

SOAK AND RINSE ALL INTERNAL PARTS WITH **VANISH BOWL CLEANER OR A COLD WATER DETERGENT**. WHEN THOROUGHLY CLEANED MONOMATIC MAY BE RE-ASSEMBLED AND STORED DRY UNTIL NEXT TRIP WITHOUT ANTI FREEZE PROTECTION.

*Monogram's chemical research department has thoroughly tested most available household cleaners and has found that Vanish bowl cleaner and cold water detergents are best. These products are available at most supermarkets and are the only products used by Monogram's Service Department.

SERVICE CHECK LIST

SYMPTOMS	PROBABLE CAUSE	CHECK FOR	CORRECT
Motor runs, but little or no water through flush jet.	Insufficient water		Add more water
	Insufficient voltage	Check voltage at source and toilet connection	See installation instructions
	Filter not submerged	Not level	Level or add more water
Timer does not function	Defective timer	Motor operates if timer is by-passed	Replace timer
Unit fails to operate but timer functions	Electric failure	Blown fuse	After checking circuit replace 3 AG-10 Amp fuse
		Dead battery or defective power source	Recharge, replace or correct
	Motor failure	Jammed or clogged filter	If cleaning filter does not correct, replace defective part(s)
Odor	Improper cleaning between charging	Was not cleaned according to directions	Add additional chemical until facilities are available for thorough cleaning.
	Evaporation of chemical ingredients due to limited use over extended time.	Last date chemical was added	Add additional chemical or clean and recharge according to operating instructions.



SERVICE TIP: If the Monomatic filter should clog due to an excess amount of toilet tissue, the condition can generally be easily corrected by reversing the wire connection color pattern inside the motor chamber.

BEFORE RED CONNECTS TO RED
WHITE CONNECTS TO BLACK

AFTER RED CONNECTS TO BLACK
WHITE CONNECTS TO RED

This procedure will cause all working parts to rotate in the opposite direction without damage to the unit.